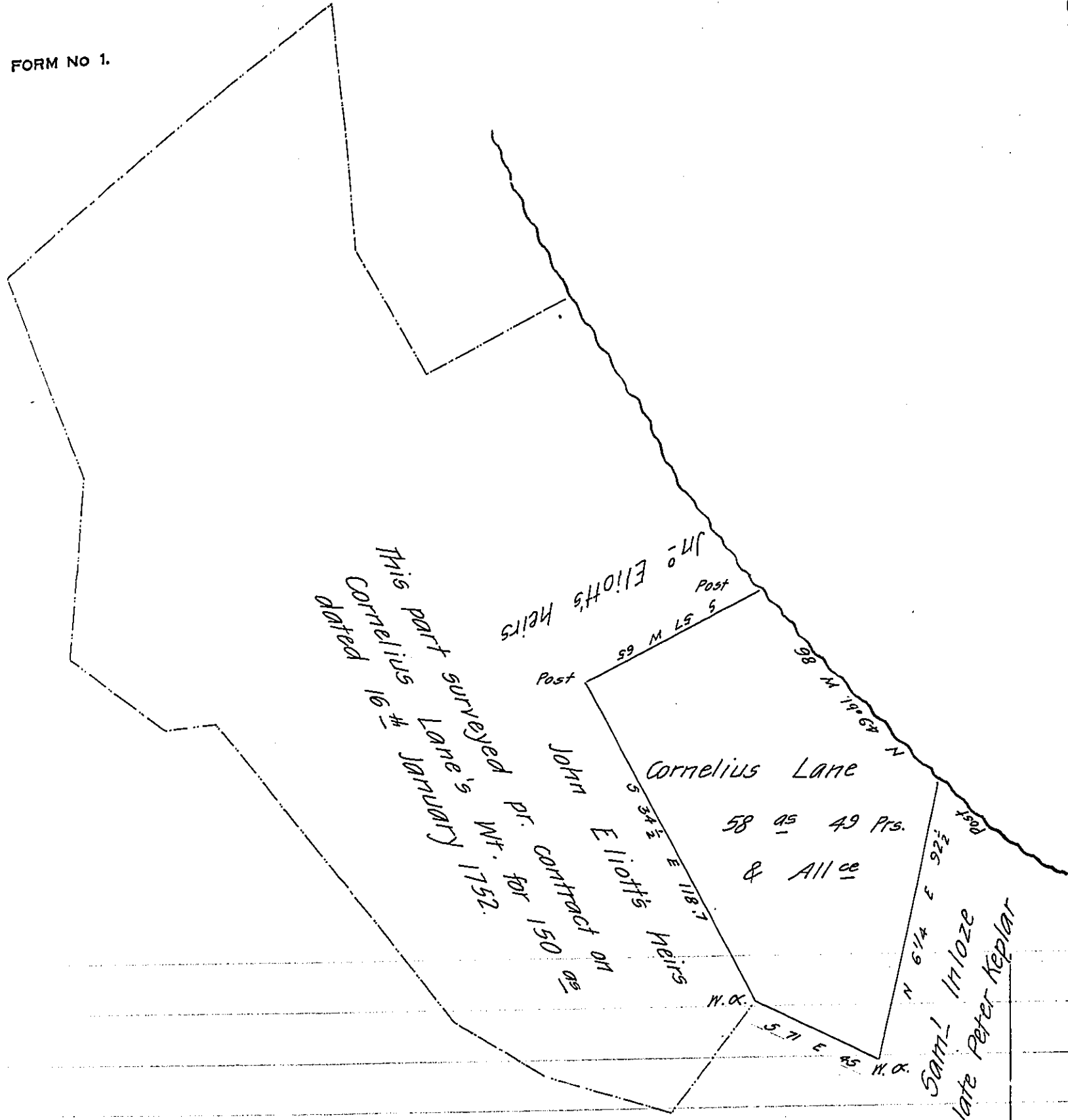


FORM NO 1.



Situate in Newbury township York County Containing fifty eight  
 acres forty nine perches & All<sup>ce</sup> Surveyed Pr Contract on Warrant to  
 Cornelius Lane for 50<sup>ac</sup> dated 4<sup>th</sup> April 1754 - the whole of which is  
 included in a survey made on the Application of James Rankin No 5586  
 dated 28<sup>th</sup> August 1769 and patented to Abraham Shelley 4<sup>th</sup> June  
 1810 - The dotted lines representing Rankin's Survey. 1st November 1832.  
 To the Board of Property } N.B. owned by John Elliott's heirs and occupied  
 - Rankin Pat<sup>d</sup> } by Frederick Hess

Danl Small. Contr.

IN TESTIMONY that the above is a copy of the original remaining on file in  
 the Department of Internal Affairs of Pennsylvania, made  
 conformably to an Act of Assembly approved the 16th day of  
 February, 1833, I have hereunto set my Hand and caused  
 the Seal of said Department to be affixed at Harrisburg,  
 this twenty fourth day of December 1908

*Henry Houck*  
 Secretary of Internal Affairs.